

UGO BASILE

BIOLOGICAL RESEARCH APPARATUS

Via G. Borghi 43,
21025 Comerio (VA), ITALY

Phone +39 0332 744574

Fax +39 0332 745488

e-mail (sales) sales@ugobasile.com

e-mail (service) service@ugobasile.com

URL <http://www.ugobasile.com>

MINIPRINTER

Cat. No. 57145



INSTRUCTION MANUAL

UGO BASILE
BIOLOGICAL RESEARCH APPARATUS
Via G. Borghi 43
21025 COMERIO - Varese, ITALY

INSTRUCTION MANUAL

MINIPRINTER

Cat. No. 57145

Series No. _____ Mfg. date _____

Instruction Manual dated August 2006
Revision 0



MINIPRINTER

Cat. No. 5 7 1 4 5

*Connects directly to most
Ugo Basile instruments for
experimental data print-out*



*New
Model*



UGO BASILE S.R.L.
BIOLOGICAL RESEARCH
APPARATUS

CHECK-LIST

57145 MINIPRINTER

CLIENTE / CUSTOMER _____

No. Ordine / Order No. _____ Data / Date ____ / ____ / ____

<i>UB code</i>	<i>Cat.No.</i>	✓	<i>Q.ty</i>	<i>DESCRIPTION</i>	<i>DESCRIZIONE</i>
57145-302			1	INSTRUCTION MANUAL	MANUALE DI ISTRUZIONE
57145-320			1	10-to-10 pin Connection Cable	Cavo Collegamento 10-10 pin
57145-321			1	20-to-20 pin Connection Cable 7178	Cavo Collegamento 20-20 pin 7178
37400-305			2	Heat-Sensitive Paper Rolls	Rotolo di Carta Termica
	M-LM 346		1	Dust Cover	Copertina

DATE / /	Serial No.	PREPARATO DA / PACKED BY
----------	------------	--------------------------

IMPORTANT/IMPORTANTE:

Check the shipment for completeness immediately after receipt: should you find any discrepancy, please fill in the following part and transmit it to our fax No. +39 0332 745488

Al ricevimento della merce controllate che la spedizione sia completa: in caso di discrepanza, completate il formulario di seguito riportato ed inviatelo al nostro fax No. 0332 745488

FROM: Name	Company/Institution
------------	---------------------

DATE	REF.
------	------

NOTES



CONTENTS

1	GENERAL.....	1
2	INSTALLATION.....	2
2.1	UNPACKING & PRELIMINARY CHECK	2
2.2	NOTES ON THE INSTRUCTION MANUAL	2
3	MINI-PRINTER OPERATION	3
3.1	CONNECTIONS.....	3
3.2	INTEGRATED KEYBOARD FUNCTIONS	4
3.3	PAPER LOADING.....	4
3.3.1	<i>HOW TO OPEN THE PRINTER COVER</i>	4
3.3.2	<i>HOW TO LOAD PAPER ROLLS</i>	5
3.3.3	<i>PAPER</i>	5
3.4	CUSTOMER SUPPORT	6
3.5	LONG INACTIVITY	6
4	ORDERING INFORMATION	6
4.1	TECHNICAL SPECS.	7
4.1.1	<i>PHYSICAL</i>	7

FIGURE INDEX

<i>Figure 1 “Thermal Printer”</i>	<i>1</i>
<i>Figure 2 “Connections”</i>	<i>3</i>



MINI PRINTER

Cat. 57145

1 GENERAL

The **new Mini-Printer 57145**, lodged in an attractive cabinet of original design, connects directly to Ugo Basile microprocessor-controlled instruments.

The MiniPrinter is a compact thermal array device, which prints on its 58mm wide paper the experimental data generated by the instrument to which it is connected.

The Miniprinter does not require any mains cord: it drains the minimum power it needs from the instrument to which it is linked, via the data transmitting cable and it switches on automatically when the instrument is switched on.

It basically consists of a printed circuit board, mounted on a plastic support, which includes the front panel and the lodging for a printing mechanism and a paper roll. It is mounted in a cabinet.

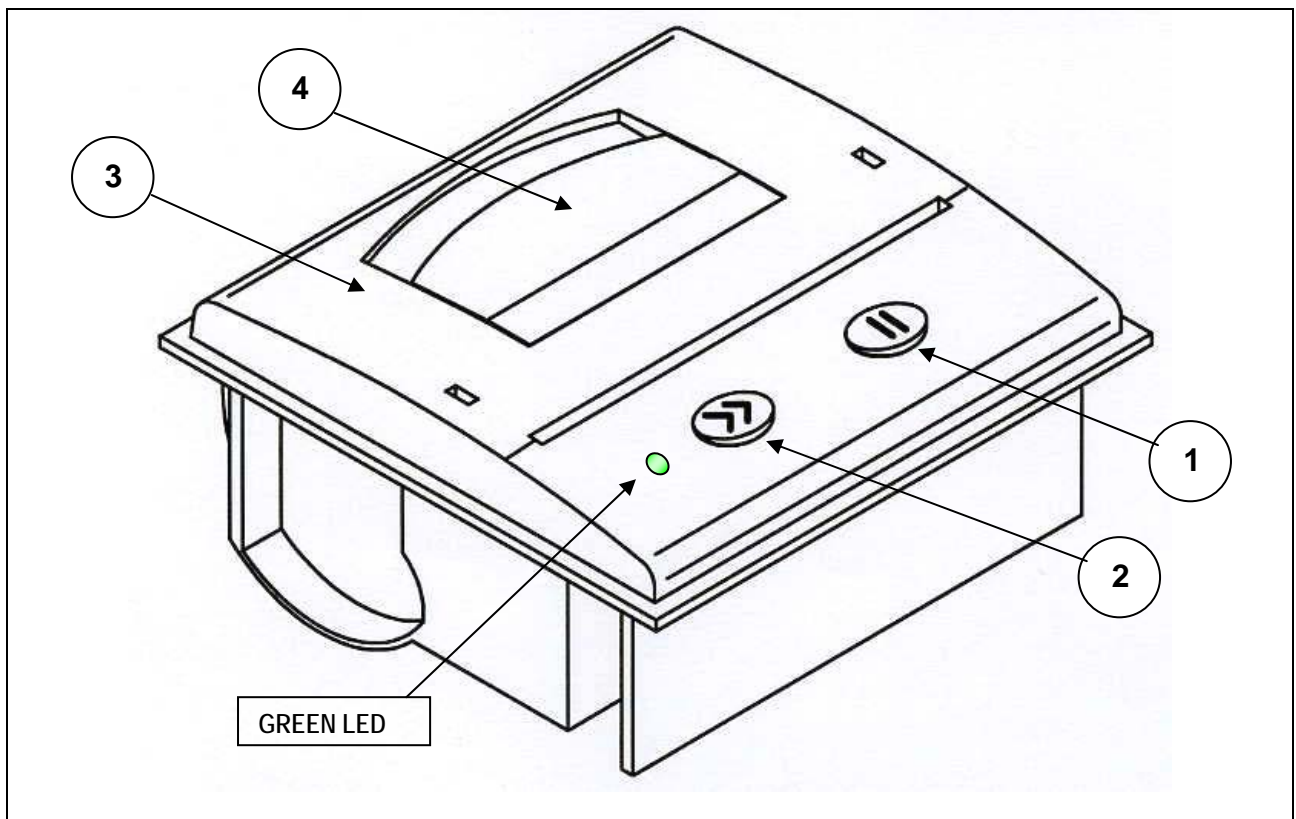


Figure 1 "Thermal Printer"

1) Push-button 1



- 2) Push-button 2
- 3) Cover Group
- 4) Lever

See also the 57145 datasheet for reference.

2 INSTALLATION

2.1 Unpacking & Preliminary Check

Check the contents of the shipment for completeness, packing list to hand, and visually inspect the instrument as soon you take it out of the packaging. Use the **Check List** supplied.

If the instrument is damaged or, after having tested it, fails to meet rated performances, notify the carrier and our company immediately.



Protect the environment!

Dispose of packaging properly, according to existing and applicable waste management rules and regulations.

2.2 Notes on the Instruction Manual

The 57145 Instruction Manual included in the package is necessary for the correct installation and operation of the instrument.

We recommend to keep the manual in good conditions, ready to be consulted by the qualified personnel who use the instrument.

Free of charge copies of the instruction manual are available upon request: please contact our service department (see paragraph 3.4-Customer Support) specifying the series number of your instrument.



3 MINI-PRINTER OPERATION

For connection to Ugo Basile instruments, via the connection cable provided with the Mini-Printer, see paragraph 3.1-Connections, please refer to the instrument instruction manual. The instrument must be OFF.

When linked to the instrument the MiniPrinter switches on automatically when the instrument is switched on.

Follow the instructions outlined in the instrument manual for the setting of the mini-Printer on the connected instrument.

3.1 Connections

Two socket connectors are located on the MiniPrinter back panel: of the instrument there are two different connectors:-



Figure 2 "Connections"

A **10-pin connector** for branching the following instruments to the MiniPrinter:-

- **35100** Hot/Cold Plate
- **37360** Tail Flick Unit
- **37370** Plantar Test Unit
- **37450** Dynamic Plantar Aesthesiometer
- **43000** Rotometer

A **20-pin connector** for branching the following instruments to the MiniPrinter:-

- **7140** Plethysmometer
- **7280** Hot Plate



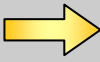
- **47600** Mouse Rota-Rod
- **47700** Rat Rota-Rod

For this purpose, a 20-pin serial connection cable Cat. No. 57145-320, and a 10-pin serial connection cable Cat. No. 57145-321 are provided with the standard package, see also paragraph 4-ORDERING INFORMATION.

Use the **Toggle Switch** to select the suitable connector.

3.2 Integrated Keyboard Functions

The functions of the two push buttons and LED (see Figure 1 “Thermal Printer”) are described in the following table:-

Printer Status 	OFF	ON	End of Paper
Push Button # 1	Execute self-test if pressed during power-ON	Switch off the printer if pressed more than 2.5 seconds	N/A
Push Button # 2	Switch on the Printer	Feed Paper	N/A
LED	OFF	Always “ON”	3 Flashes “ON”

3.3 Paper Loading

3.3.1 How to Open The Printer Cover

Pull the lever (4, see Figure 1 “Thermal Printer”) until the cover group (3) is released from its locking position.

Do not use excessive force, to avoid damages to the lever





3.3.2 How to Load Paper Rolls

Changing the paper roll is a very simple business. After having opened the cover, remove the old paper roll.

Position the new roll in its receptacle, paying attention to its orientation, see picture on the right.

If the roll is mounted in the reverse way, the thermal coating of the paper goes on the wrong side and no printing takes place.



To close the cover group correctly, press on both sides of the cover simultaneously, or alternatively press on the middle area of the cover, near the paper exit, see pictures below.



To cut it correctly, pull the paper towards the tear bar, from one side to the other



3.3.3 Paper

As replacement, you can order Cat. 37400-305, package of 10 Heat-Sensitive Paper Rolls, see also paragraph 4-ORDERING INFORMATION.



3.4 Customer Support

For any further information you may desire concerning the use and/or maintenance of the Hot Plate, please do not hesitate to get in touch with our local distributor or with our **service department** at:-

**UGO BASILE**

Viale G. Borghi 43
21025 COMERIO – Varese, ITALY



Phone : +39 0332 744574



Fax : +39 0332 745488



e-mail : service@ugobasile.com

Before sending any instrument to our factory for repair, we recommend you to get in touch with our service department to obtain a return authorization number (R.A.N.) and shipping/packing instructions.

We may not be held responsible for damages during transport due to poor packing. Whenever possible, please use the original packing.

3.5 Long Inactivity

The instrument does not require any particular maintenance after long inactivity, except cleaning.

4 ORDERING INFORMATION

- 57145** **MiniPrinter, complete**
- 57145-320** 10-to-10 pin Connection Cable
- 57145-321** 20-to-20 pin Connection Cable type 7178,
- 37400-302** Instruction Manual
- 37400-305** Package of 10 Heat Sensitive Paper Rolls



4.1 TECHNICAL SPECS.

4.1.1 *Physical*

Dimensions : 25 (w) x 26 (d) x 12 (h) cm

Weight : Kg. 0,9

Shipping Dimensions: 45 x 34 x 26 cm

Shipping Weight : Kg. 5.00 approx.



UGO BASILE S.r.l.
BIOLOGICAL RESEARCH APPARATUS
Comerio - VA - ITALY

**DICHIARAZIONE CE DI CONFORMITA'
CE CONFORMITY STATEMENT**

**Produttore
Manufacturer**

UGO BASILE S.R.L.

Società / company

Via G. Borghi, 43 - 21025 Comerio, VA, ITALY

Indirizzo / address

+39 0332 744574 - +39 0332 745488

Telefono / phone

fax

SI DICHIARA CHE / WE HEREBY STATE THAT

**Apparecchiatura
Instrument**

MINIPRINTER
Cat. No. 57145

- È costruita in conformità alle DIRETTIVE DEL CONSIGLIO DELLE COMUNITÀ EUROPEE concernente il ravvicinamento delle legislazioni degli Stati Membri relative alla Bassa Tensione (73/23/CEE) e alla Compatibilità Elettromagnetica (89/336/CEE). *Is manufactured in conformity with the provisions of the EUROPEAN COMMUNITY COUNCIL directives for Low Voltage (73/23/CEE) and Electromagnetic Compatibility (89/336/CEE).*
- È costruita in conformità alle seguenti norme e specificazioni tecniche armonizzate / *Conform the following directives and harmonized technical specifications:* EN 292, EN 1050, EN 60204-1, EN 61010-1, EN 61000-3-2, EN 61000-3-3, 61000-4-2, EN 61000-4-3, EN 61000-4-4, EN 61000-6-1, EN 61000-6-2, EN 61000-6-3, EN 61000-6-4.

Direttore Generale / Director

Ugo Basile

Responsabile del Prodotto / Product Manager

Nome / Name

Agosto 2006

Data / Date

Firma / Signature

