



Sociability Apparatus (3 - chambered social test)

Cat. No. 46503

FOR STUDIES OF:

- Autism
- Social Memory & Novelty
- Pair-bonding
- Dominance hierarchies

General

The new Ugo Basile Sociability Apparatus (3-chambered social test) is a valuable tool to study SOCIAL INTERACTION in mice. It consists of a transparent Perspex cage, a special non-reflective, grey-colored floor and 2 grid enclosures. Many authors (e.g. Moy et al. 2004; Nadler et al. 2004) have shown that a 3-chambered box can be used to test:

- Social Novelty Preference
- Sociability
- Dominance



Main Features

- Works even with the most basic video-tracking software
- Grid Enclosures maximize animals interaction
- Different colours and sizes are available on request

Rationale and Outline of the Procedure

The Ugo Basile 3-Chambered Apparatus can be used with many different procedures.

In their 2004 paper, Moy and coauthors, describe a typical procedure: after a period of habituation a mouse's sociability is determined by measuring the time spent by the freely-moving mouse in the proximity of the grid enclosures containing the first 'stranger' mouse. A second 'stranger mouse' is then introduced in the box and the preference for the new 'stranger' mouse can be easily assessed



3-Chambered Box & Grid Enclosures

The clear perspex box gives ideal transparency for visual observation of the experiment or for side positioning of the video-camera.

2 sliding doors (5 x 8 cm) in the central compartment can be closed to confine the animal. Dimensions for each of the 3 compartments are 20 x 40 x 22 (h) cm.

The grey floor gives high contrast with both light and dark animals, allowing for automated video-tracking of the animals. Its special painting also gives a non-smooth surface, pleasant for the animals to walk on.

The grid enclosures allow mice to closely interact. Grid bars have a diameter of 3 mm in diameter and are spaced by 7mm. The enclosures have an internal diameter of 7 cm, and height is 15 cm. The top and the bottom are made of grey (Cat. No. **46503-003**) or white (**46503-013**) PVC.

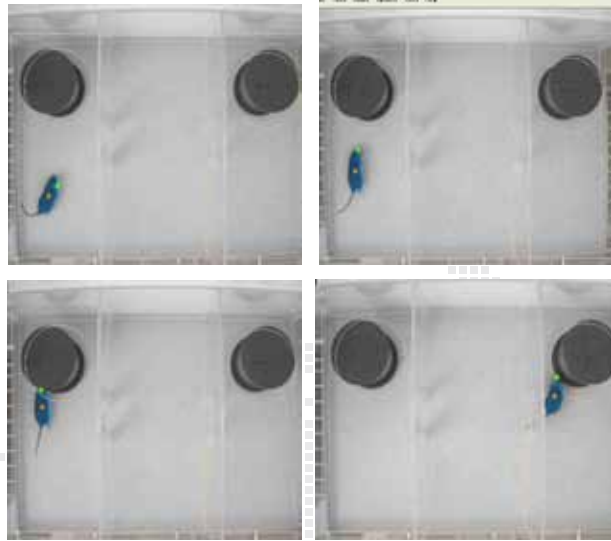


Different dimensions can be manufactured on request.



Optimized for Video-Tracking

The grey floor gives best contrast to both light and dark animals, which is the most critical factor for ALL VIDEO-TRACKING SOFTWARE to work properly.



Images and videos, courtesy of Dr. Patrizia D'Adamo (San Raffaele Institute, Milan, Italy)

Ordering Information

46503 Mouse Cage for Sociability, complete with two grid cages (grey, I.D. 7 cm, height 15 cm)

46503-003 Additional Grid Enclosures for Sociability (grey, I.D. 7 cm, height 15 cm)

46503-013 Additional Grid Enclosures for Sociability (white, I.D. 7 cm, height 15 cm)

Bibliography

● S.S. Moy et alia: "**Sociability and Preference for Social Novelty in Five Inbred Strains: an Approach to Assess Autistic-Like Behavior in Mice**" *Genes, brain and behavior* 3(5):287-302, 2004

● J.J. Nadler et alia: "**Automated Apparatus for Quantitation of Social Approach Behaviors in Mice**". *Genes, Brain and Behavior* 3(5): 303-314, 2004.